

Electrify Heartland Plan

Appendix M: Initial Website Map



Project title: Kansas – Missouri
Community Readiness for EV and EVSE

Funded by: US DOE DE-EE0005551

By: Metropolitan Energy Center
and Kansas City Regional Clean Cities Coalition

With: Black & Veatch





Electrify Heartland Plan © 2012 by Metropolitan Energy Center.

The material in this report was created and compiled from the work of U.S. DOE award DE-EE0005551: Kansas–Missouri Community Readiness for EV and EVSE. Government agencies, private entities and individuals may use, reproduce or transmit pages from this report for reasonable purposes of planning and implementing electric vehicle and electric vehicle charging station projects, provided that it maintains all copyright, trademark, and other proprietary rights or notices. Users may not otherwise use, reproduce, download, store, post, broadcast, transmit, modify, sell or make available to the public content from the report without the prior written approval of Metropolitan Energy Center. Write to MEC c/o Clean Cities, 3810 Paseo Blvd, Kansas City, MO, or visit www.metroenergy.org.

U.S. Department of Energy Acknowledgement and Disclaimer:

This material is based upon work supported by the Department of Energy under Award Number DE-EE0005551. This report was prepared as an account of work sponsored by an agency of the United States Government. Neither the United States Government nor any agency thereof, nor any of their employees, makes any warranty, express or implied, or assumes any legal liability or responsibility for the accuracy, completeness, or usefulness of any information, apparatus, product, or process disclosed, or represents that its use would not infringe privately owned rights. Reference herein to any specific commercial product, process, or service by trade name, trademark, manufacturer, or otherwise does not necessarily constitute or imply its endorsement, recommendation, or favoring by the United States Government or any agency thereof. The views and opinions of authors expressed herein do not necessarily state or reflect those of the United States Government or any agency thereof.

This work was developed in response to the federal funding opportunity announcement titled Clean Cities Community Readiness and Planning for Plug-in Electric Vehicles and Charging Infrastructure. FOA: DE-FOA-0000451

CFDA Number 81.086



Electrify Heartland Plan

Electrify Heartland Project Abstract

Electrify Heartland is an electric vehicle planning project managed by Metropolitan Energy Center. It is a product of the Greater Kansas City Plug-In Readiness Initiative, co-chaired by Kansas City Regional Clean Cities Coalition. Our goal is to produce a regional plan to prepare public resources and secure the economic and environmental benefits of plug-in vehicles within targeted metro areas with estimated 2.7M population. The targeted metro areas include Kansas City, MO & KS; Jefferson City, MO, Wichita, KS; Salina, KS; Lawrence, KS; and Topeka, KS. (14 Counties: Cass, Clay, Cole, Douglas, Jackson, Johnson, Leavenworth, Miami, Platte, Ray, Saline, Sedgwick, Shawnee, Wyandotte).

Electrify Heartland Steering Committee

| Team | Organization | Name |
|------------------------|---|-------------------|
| Charging Stations | Initiatives | Troy Carlson |
| Charging Stations | LilyPadEV | Larry Kinder |
| Charging Stations | Logios | Gustavo Collantes |
| Government Policy | Polsinelli Shughart PC | Alan Anderson |
| Government Policy | Black & Veatch | Bill Roush |
| Project Administration | Metropolitan Energy Center | Ruth Redenbaugh |
| Project Administration | Metropolitan Energy Center | Kelly Gilbert |
| Public Education | Nation Ranch Marketing, Inc. | Bill Patterson |
| Training | Kansas City Kansas Community College | Bob McGowan |
| Training | National Electrical Contractors Association | Jim Cianciolo |
| Utility Grid | Black & Veatch | Sam Scupham |
| Vehicle & Fleet | University of Missouri at Kansas City | Henry Marsh |

Exhibit i-i. Electrify Heartland Steering Committee Members



Table of Appendices

The following appendices are in separate files on www.ElectrifyHeartland.org

- A. EV Readiness Index
- B. Greater Kansas City Plug-in Readiness Strategy
- C. Grant Proposal for Project
- D. EVSE Permitting Recommendations
- E. Federal Highway Administration Signage Memorandum
- F. EV Business Coalition
- G. Automotive Technician Curriculum
- H. Electric Vehicle Infrastructure Training Program promotion
- I. Getting started with EV
- J. Electric Vehicle Fleet Tools
- K. Electric Vehicle Hangtag
- L. EVSE Site Host Considerations
- M. Initial Website Map
- N. Air Quality
- O. EV Ready Communities
- P. Sample Presentations about EV Forecasts and Redirected Spending Potential
- Q. EVSE Corridor Analysis
- R. Blank
- S. Blank
- T. Blank
- U. Social Media
- V. Press Kit
- W. Contributors
- X. Exhibits
- Y. Glossary
- Z. Bibliography



Appendix M: Initial Website Map

Synopsis:

While designing a Website to inform the public about electric vehicles and electric vehicle supply equipment, a map of the flow between web pages was developed to organize the site.

Section Authors:

Bill Patterson, Nation Ranch

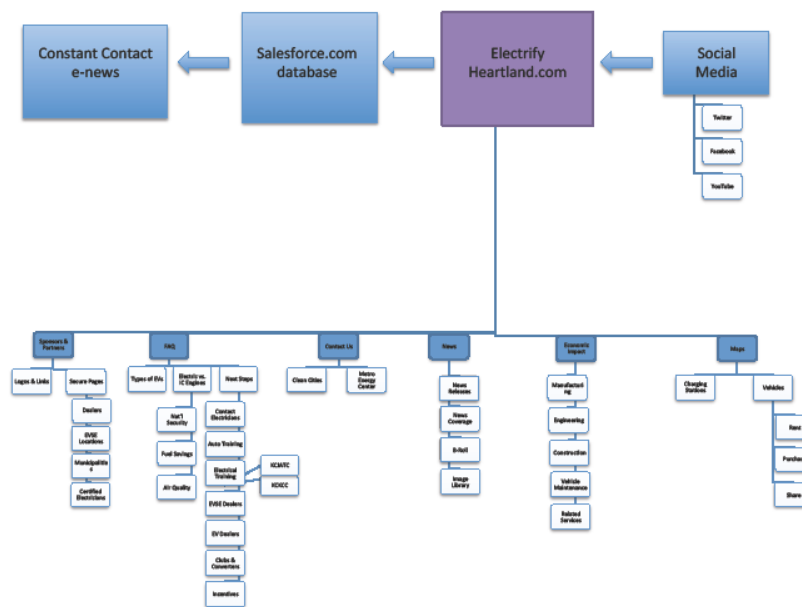


Exhibit M-1: Initial Website Map